

## Chronic Medication Service (CMS) Standard Operating Procedure-No 2

### CMS Pharmaceutical Assessment and Care Planning

Name of Pharmacy:

Address of Pharmacy:

Town:

Postcode:

PPD Contractor Code:

### Objectives

To produce a pharmaceutical assessment required for registered patients of CMS

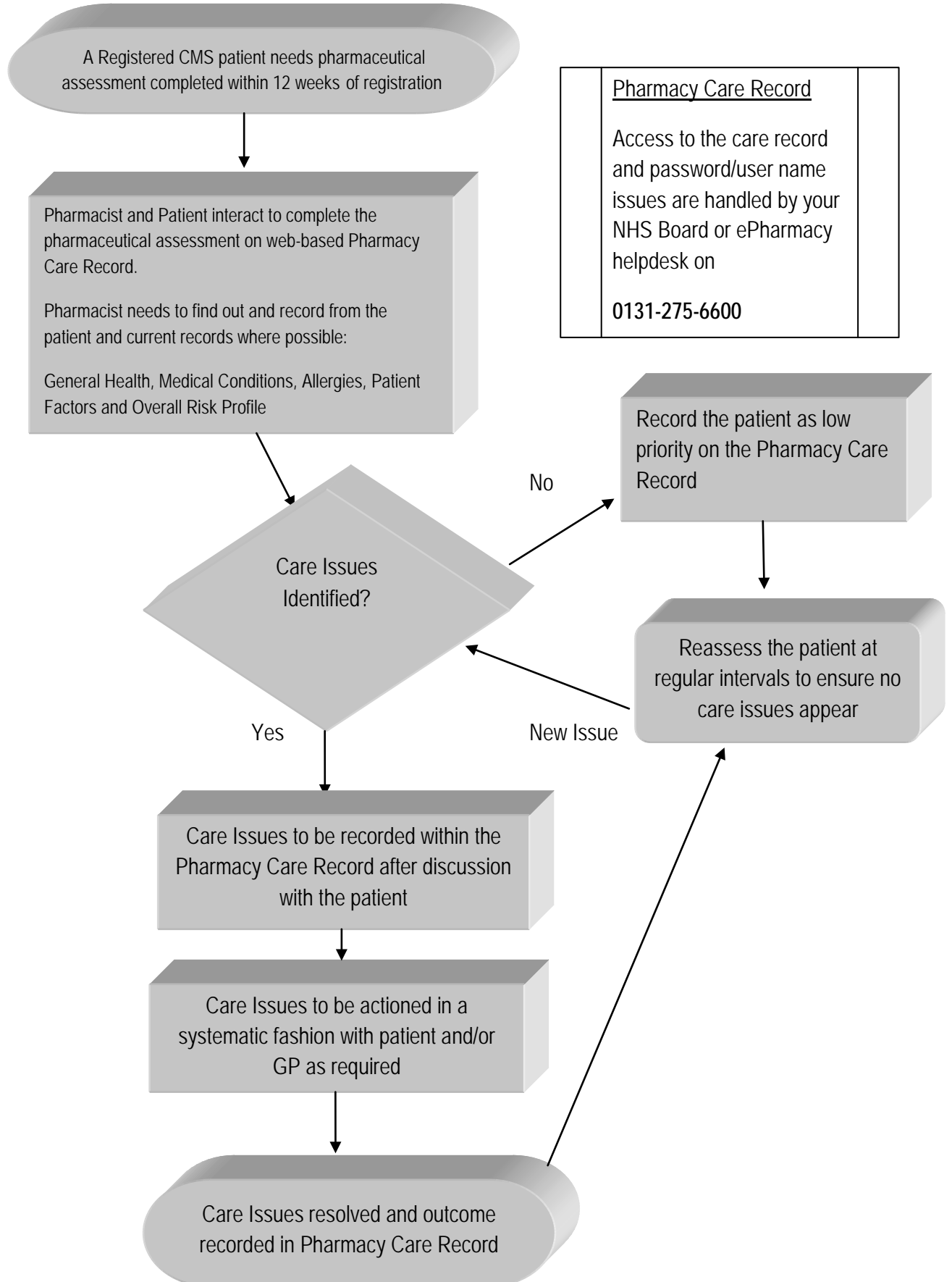
To produce a patient's pharmaceutical care plan if required as a result of the pharmaceutical assessment.

To ensure pharmacists discuss identified care issues as appropriate with the patient and/or GP

### Scope

Pharmaceutical Assessment and Care Planning will only be completed by the pharmacist

## Process



## Audit

Pharmacists or their staff could audit:

Number of Care Issues identified and recorded

Number of Care Issues successfully resolved

Number of Care Issues unresolved

Number of reviews of care-plans completed

## Other Useful Information

NHS Scotland Chronic Medication Service Directions

[http://www.sehd.scot.nhs.uk/pca/PCA2009\(P\)11.pdf](http://www.sehd.scot.nhs.uk/pca/PCA2009(P)11.pdf)

NES Chronic Medication Services Implementation Pack

[http://www.nes.scot.nhs.uk/pharmacy/newcontract/documents/14282\\_cms\\_pack\\_web.pdf](http://www.nes.scot.nhs.uk/pharmacy/newcontract/documents/14282_cms_pack_web.pdf)